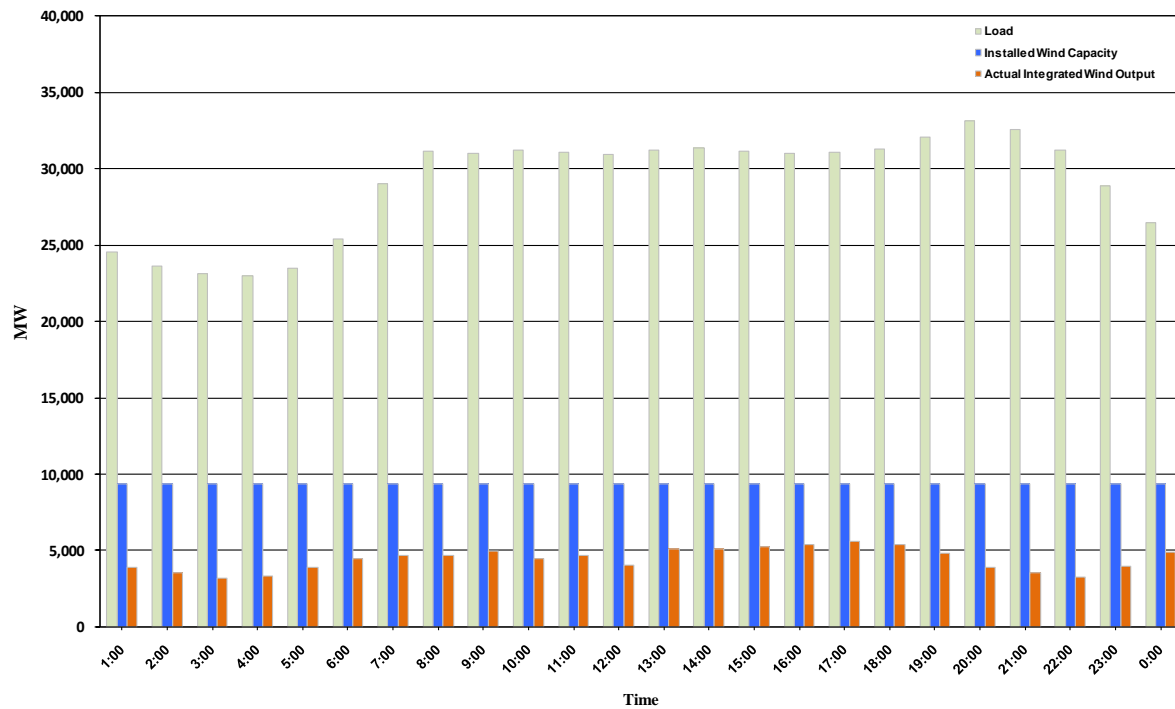




ERCOT Grid Operations Wind Integration Report: 11/03/10

Peak Load	33,112 MW
Load Peak Hour	20
Wind Record 06/12/10	7016 MW
Max Wind value	5783 MW
Wind Peak Hour	12:50:04
Wind Integration %	18.43

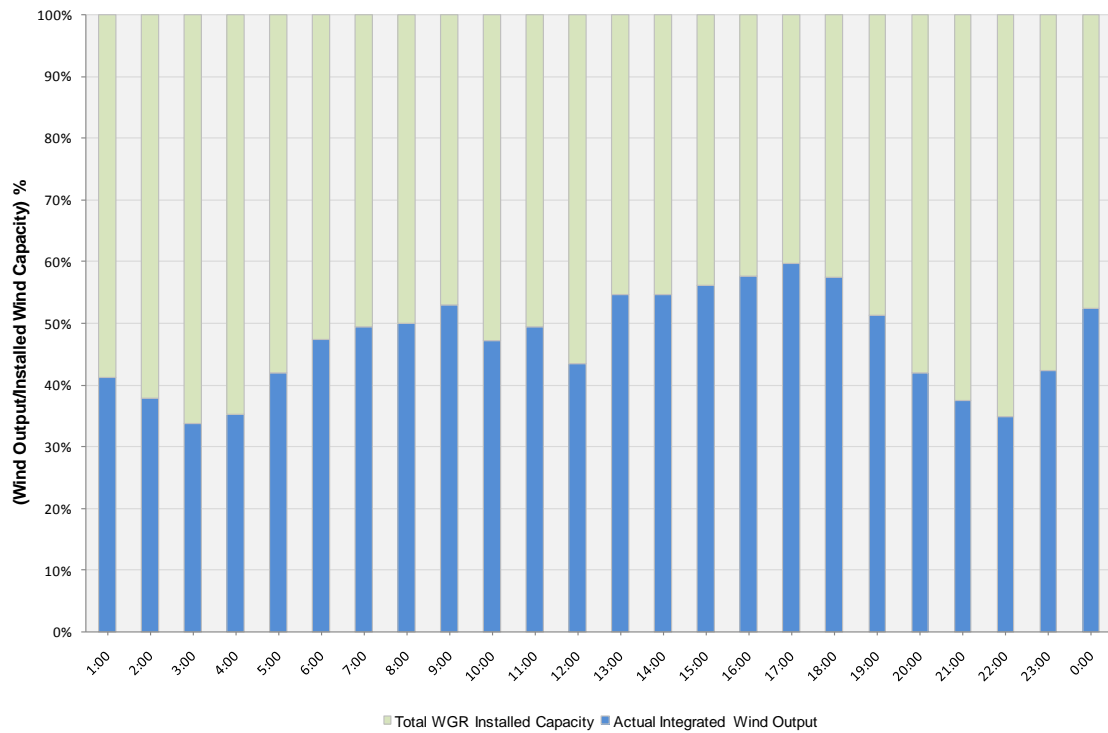
Hourly Average Actual Load vs. Actual Wind Output
11-03-2010





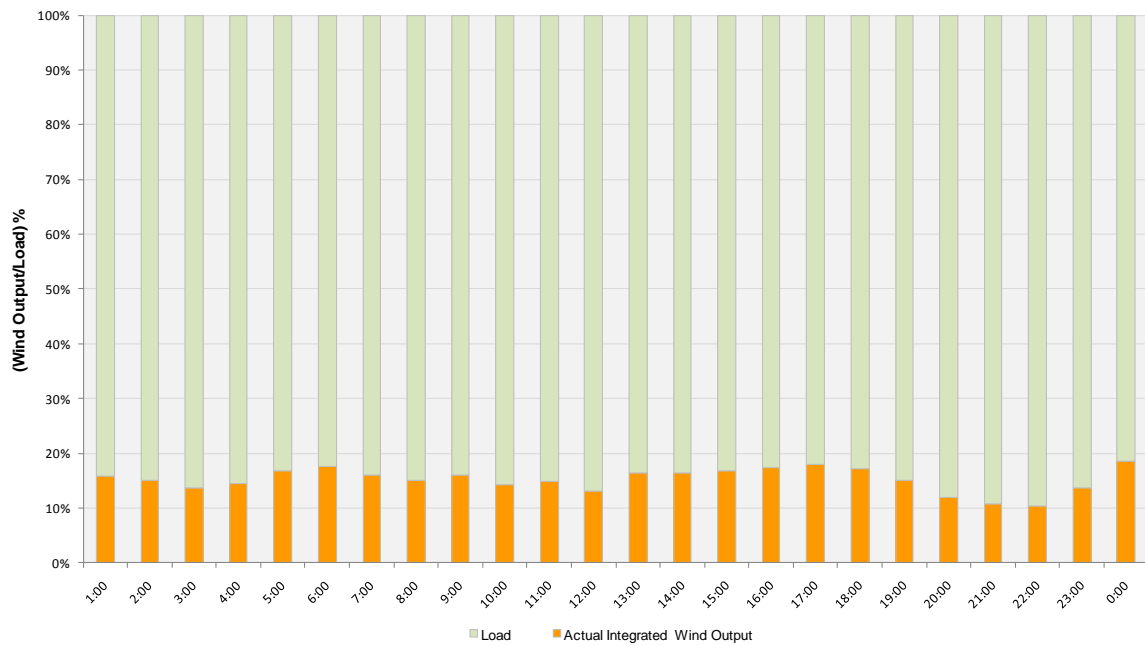
Actual Wind Output as a Percentage of the Total Installed Wind Capacity

11-03-2010



Actual Wind Output as a Percentage of the ERCOT Load

11-03-2010





ERCOT Load vs. Actual Wind Output 10/27/10 - 11/03/10

